

# WLE: The Nile Basin and East Africa Focal Region



RESEARCH  
PROGRAM ON  
Water, Land and  
Ecosystems



Dr. Simon Langan

WLE Nile Focal Regional Co ordinator

# What is WLE?

- A global Research for Development programme
- 11 Partners, led by the International Water Management Institute

*A healthy functioning ecosystem is seen as a prerequisite to sustainable agricultural development, resilience of food systems and human well-being.*

- Ecosystem Services lens: promoting new, integrated approach to sustainable development

## WLE: Conceptually

- Ecosystem and services approach for sustainability:
  - Provisioning
  - Regulating
  - Cultural
  - Supporting
  - Providers and consumers differ in space and time
  - Not blue water but path of raindrop
  
- Takes/Needs:
  - Demand driven
  - Integrated/ transdisciplinary approach
  - Capacity building
  - Primary data
  - Analysis
  - Communication and dissemination at scale

## Unique Selling Points

- Ecosystems as the foundation for agriculture productivity, sustainable land & water management, equity, livelihoods & prosperity
- Working across sectors to provide integrated solutions to reverse land and water degradation
- We combine an ecological & natural resource management approach to build resilience = Integrated
- Not protecting ecosystem for the sake of the ecosystem
  - Support human development by working with ecosystems and people

# WLE Program Structure

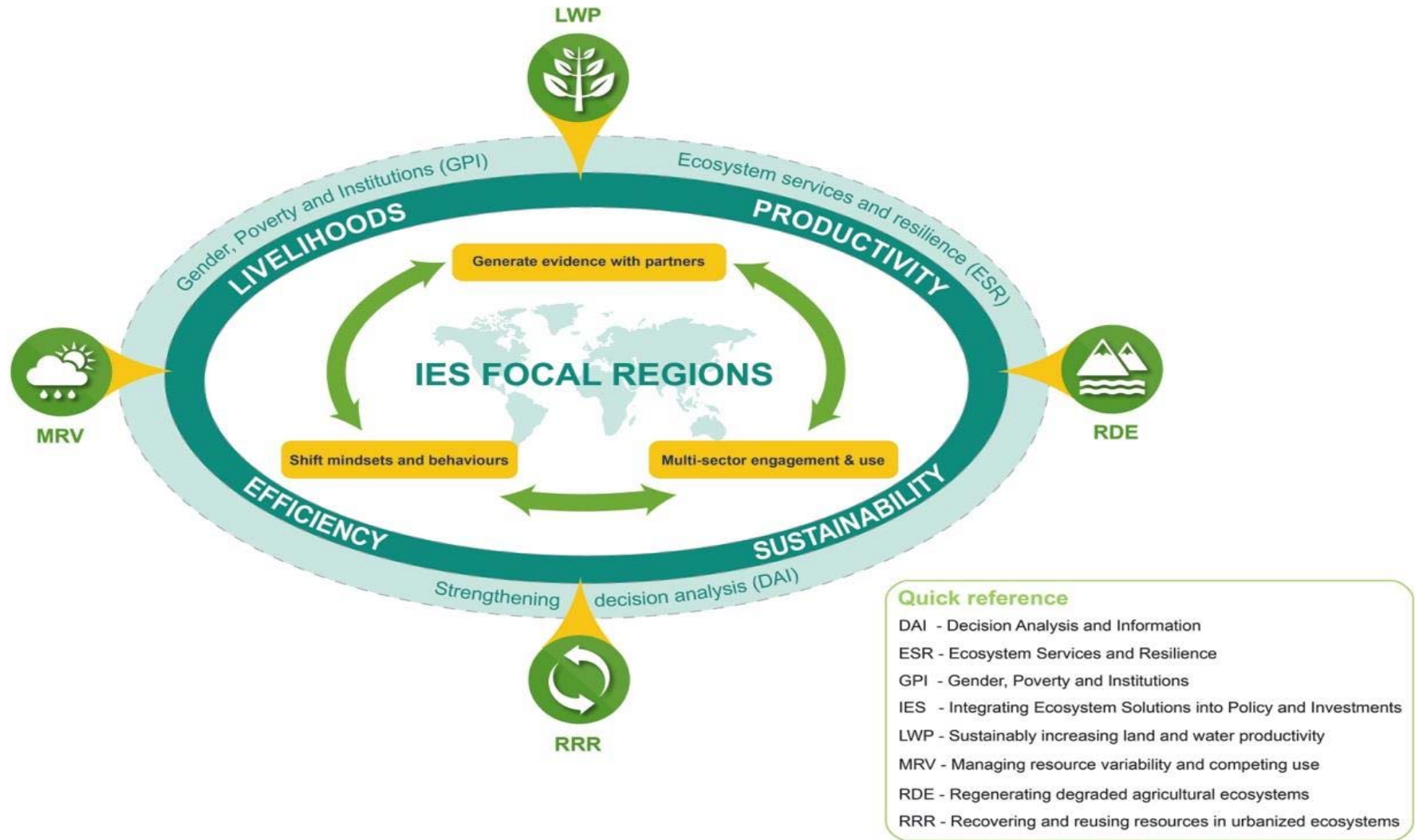


Figure 1: Program structure and theory of change

Uniting agriculture and nature for poverty reduction

# Integrating Ecosystem Solutions Into Policy & Investments

## Critical Issues

- National & regional issues addressed in integrated manner
- Supporting development through sound economic investments.

## Key areas of work

- The Nile and East Africa
- The Volta/Niger
- The Greater Mekong
- The Ganges
- The Innovation Fund



**LEADER:**  
Nathaniel Matthews



Integrating ecosystem  
solutions into policies  
and investments

# Gendered Approach

Move away from:

- Women produce < men (23- 66%)
- Cause unequal access to inputs (fertilizer, information and labour, credit, education)
- What of next generation and youth?



# Nile Basin and East Africa

- Rapidly expanding economies reliant on agriculture
- Still persistent food insecurity
- Different Farming systems
  - Pastoralists
  - Rainfed
  - Irrigation
  - FDI, energy.....



## Nile issues root causes

- Poor land use planning
- Poor water management
- Poor land management
- Limited access to resources
- Low capacity human/knowledge
- Equal access to all of society
- Lack of policy development and implementation
- Reduction in ecosystem function
- Unsustainable natural resources use

# Nile Basin and East Africa



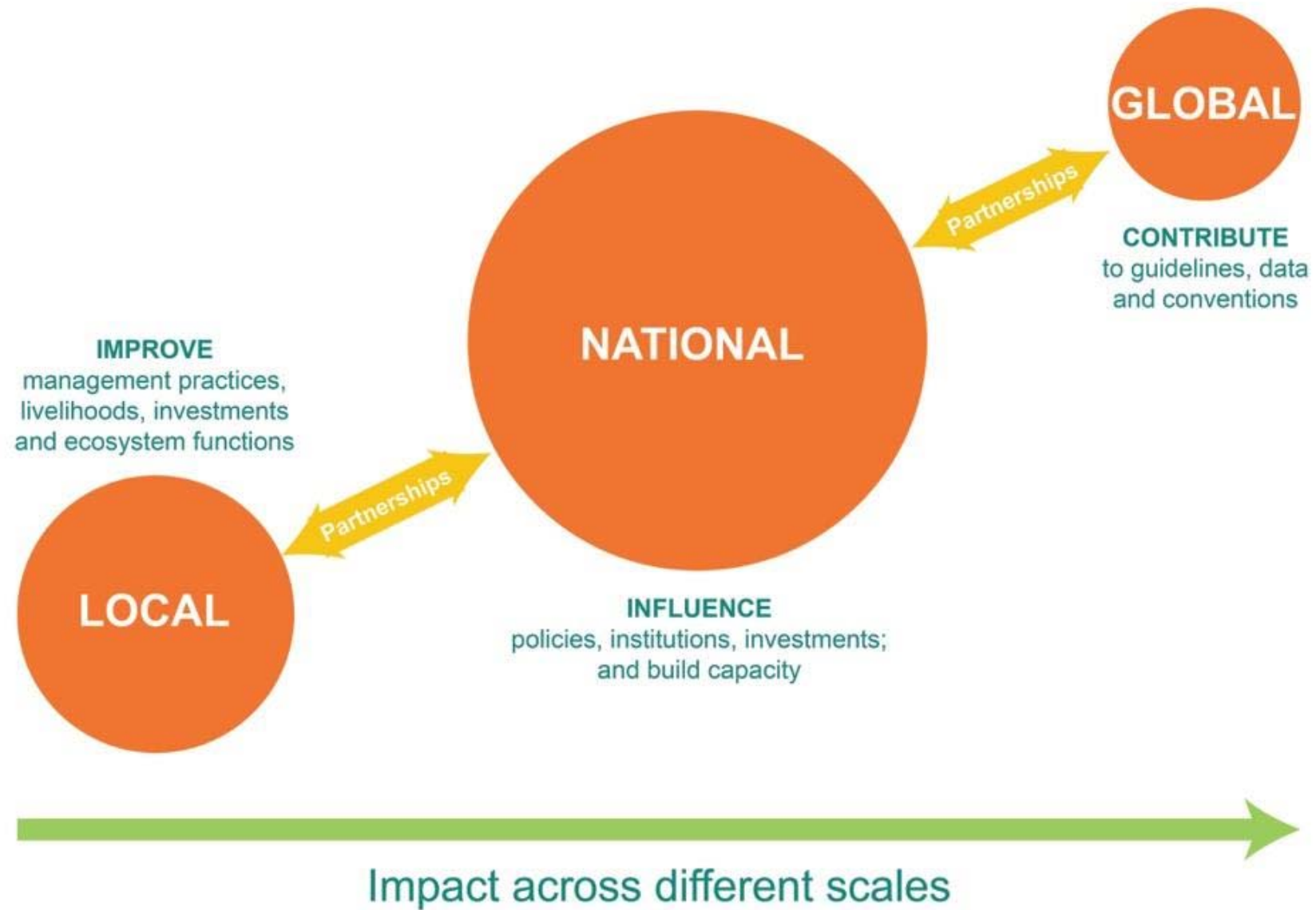
## Priority activities:

- Understanding and minimizing the trade-offs in ecosystem services from agricultural and infrastructure development
- Achieving sustainable land management in degradation hot spots
- Strengthening equity and the role of women and youth in the sustainable intensification of agriculture and ecosystem management

# Towards Outcomes

- Change in practice: At least one other CRP will have adopted a more inclusive systematic approach to ecosystem services thinking greater than plant/field up to community, landscape and basin scales. This will happen within 2-5 years.
- Policy development/amendment: The NBI is using WLE tools and forums in their analysis planning and communication to affect policy change across the Nile Basin, specifically the consideration of selected ecosystem services and gender aspects of the policy will be targeted. This will happen within 5 years.
- Capacity building: More than 10 national universities/research organizations within the Nile will be using WLE generated knowledge, tools and publications which highlight the role of women and youth in natural resource management. This will occur within 3-5 years.

# WLE at Scale



# Users

- National Governments
- Donors – USAID, World Bank, EU, BMGF, AU, FAO, IFAD
- Investors – World Bank, Foundations, AU, Private Companies, NGOs, GIZ
- International Policy – UNEP, UNECA, UNDP, IUCN, EAC
- Research – sub-national, national, international
- Capacity – universities, ASARECA, Kilimo Trust, UNESCO-IHE
- Others – Agricultural advisory boards, EAC, SAGCOT, General Public, Lake Victoria Commission, Nile Basin Initiative (ENTRO/RBAs), other CRPs (Humidtropics, CCAFS, Drylands) and regions of WLE

# Nile Basin and East Africa Projects (1 of 2)



1. Agrobiodiversity for ecosystem service restoration in Ethiopia  
Led by Bioversity International
2. Using rangeland management to create resilient livelihoods in Ethiopia  
Led by Global Institute of Sustainability, Arizona State University
3. Sustaining Land Management Interventions through Integrating Income Generating Activities, Addressing Local Concerns and Increasing Women's Participation  
Led by Amhara Regional Agricultural Research Institute
4. Nile Ecosystems Valuation for wise-Use  
Led by Makerere University, Uganda

# Nile Basin and East Africa Projects (2)

5. Accounting for Nile waters: Connecting investments in large scale irrigation to gendered reallocations of water and labor in the Eastern Nile Basin

Led by [UNESCO-IHE](#)

6. Water, Land and Ecosystems and Trade in Staples (WaLETS): using regional trade in staples for equitable food and nutrition security and ecosystems services in the EAC

Led by [Kilimo Trust](#)

7. Laying the foundations for effective landscape-level planning for sustainable development in the SAGCOT corridor: Sumbawanga agricultural development cluster

Led by [The Nature Conservancy](#)

8. Harnessing Floods to Enhance Livelihoods in Ecosystem Services

Led by [Spate Irrigation Network Foundation](#)

# Projects to Nile and Global programme

- 8 Supplemented by CG research projects and Innovation Fund work
- Influencing investments
- Providing evidence
- Consider/frame by Ecosystem Services
- Role of women and youth

Expectations and support- promoting ES/gender/lessons learned

- Reports on progress (issues, highlights)
- Videos/photos/meetings
- Wiki/web/blog/newsletter- internal/external
- Publication / promotion material
- Stakeholder engagement and awareness raising
- Regional stakeholder workshop



# WLE staff structure and support

## Nile

- Simon Langan co-ordinator
- Zadoc Ogutu- manager
- Abby Waldorf- comms
- Desalegne Tadesse- uptake
- Gender- tba
- Fred Kizito-ESS
- Yemisrach Regassa- support

## Programmatic

- Andrew Noble
- Nate Matthews
- Emma Greatrix
- Nicoline de Haan
- Michael Victor
- David Rider-Smith
- Mala Ranawake
- (Fabrice de Clerk)



RESEARCH  
PROGRAM ON  
Water, Land and  
Ecosystems



[wle.cgiar.org/focal-regions/east-africa](http://wle.cgiar.org/focal-regions/east-africa)

## Dinner after thoughts for discussion

- Format/time/location of Ethiopia WLE stakeholder information meeting
- Gender tool
- Utility of soil as an integrating ecosystem component
- Other support from WLE
- Use of capacity building and start up project money